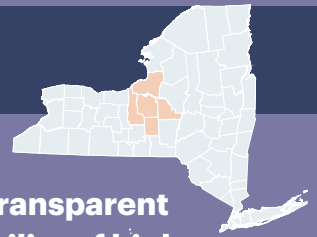


# CHILD CARE AVAILABILITY: Central NY Profile



All families with infants and toddlers should have access to affordable, high-quality, safe, and culturally responsive child care supported by a universal, transparent quality rating and improvement system. That requires increasing the availability of high-quality child care slots and ensuring that the full range of providers have the resources and support they need for stability and success.

↖ ↗ **THE BIG PICTURE:** Infant and toddler child care capacity has decreased from 2009 to ↙ ↘ **2018**, and the region has lost a large share of infant/toddler child care providers.

In 2017, there were an estimated **15 infant/toddler child care slots per 100 children ages 0-5 in Central NY** (compared to 15 statewide)

**3% ↓**

decrease in **total capacity** from 2009 to 2018



**0%**

change in **capacity excluding School-Aged Child Care (SACC)** from 2009 to 2018

**9% ↓**

decrease in **infant/toddler child care capacity** from 2009 to 2018

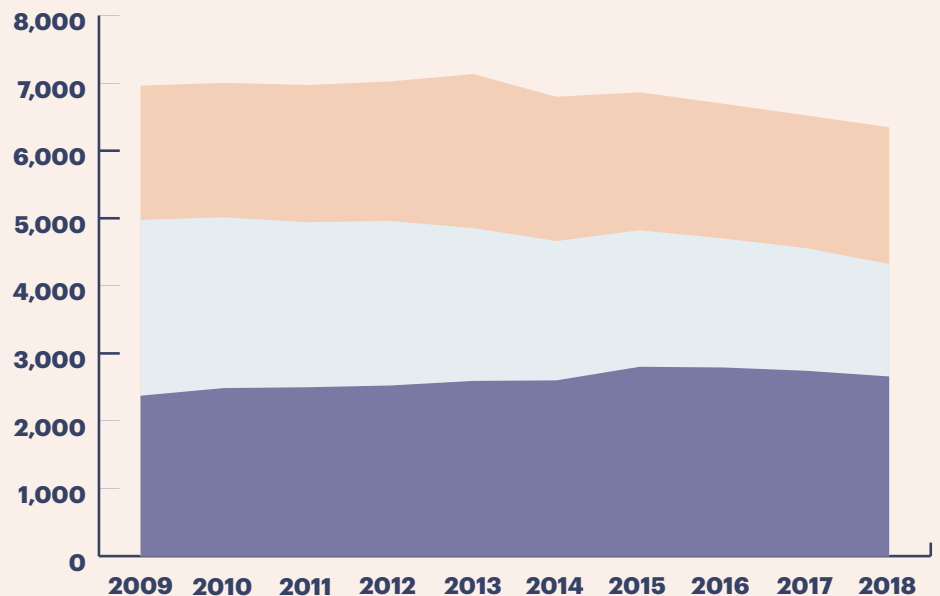


**21% ↓**

decrease in **infant/toddler child care providers** from 2009 to 2018



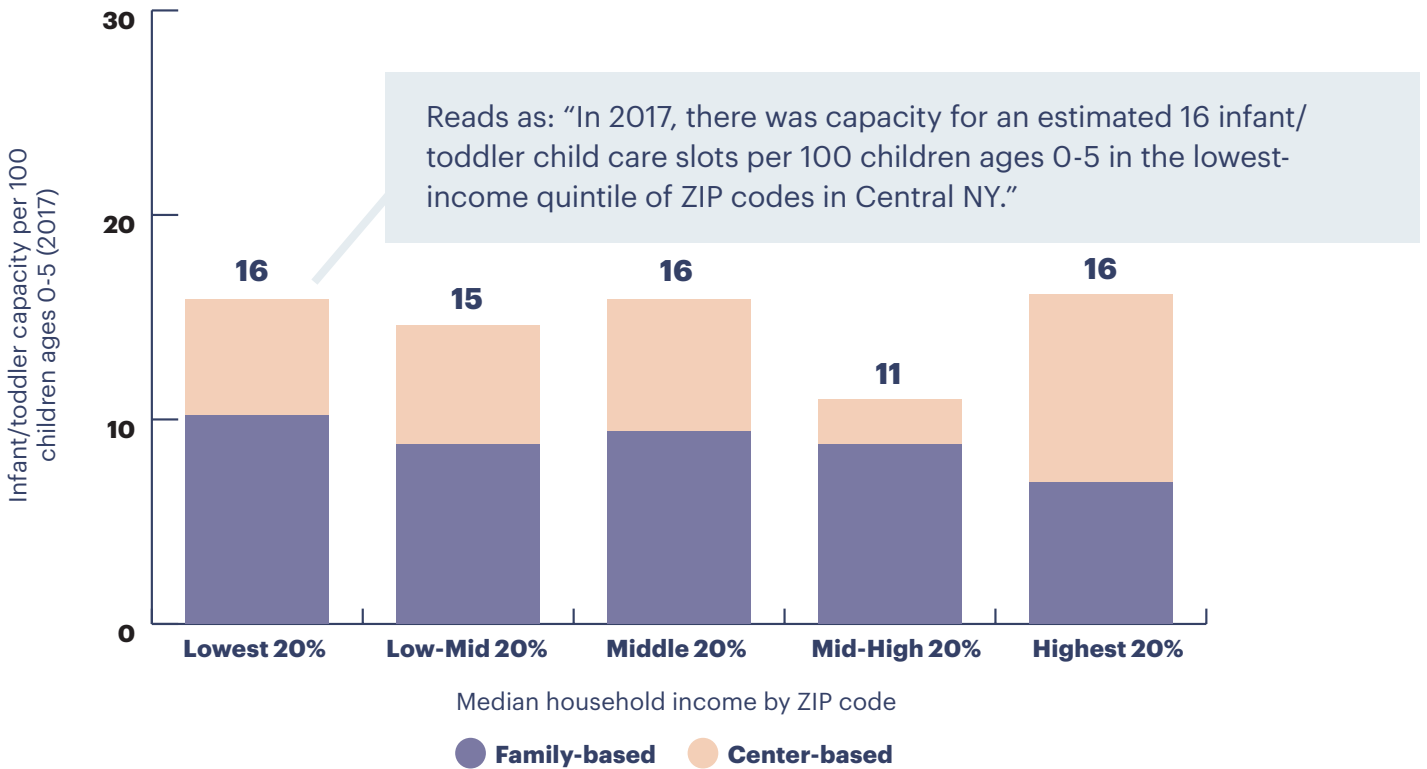
**Infant/toddler child care capacity:** From 2009 to 2018\*



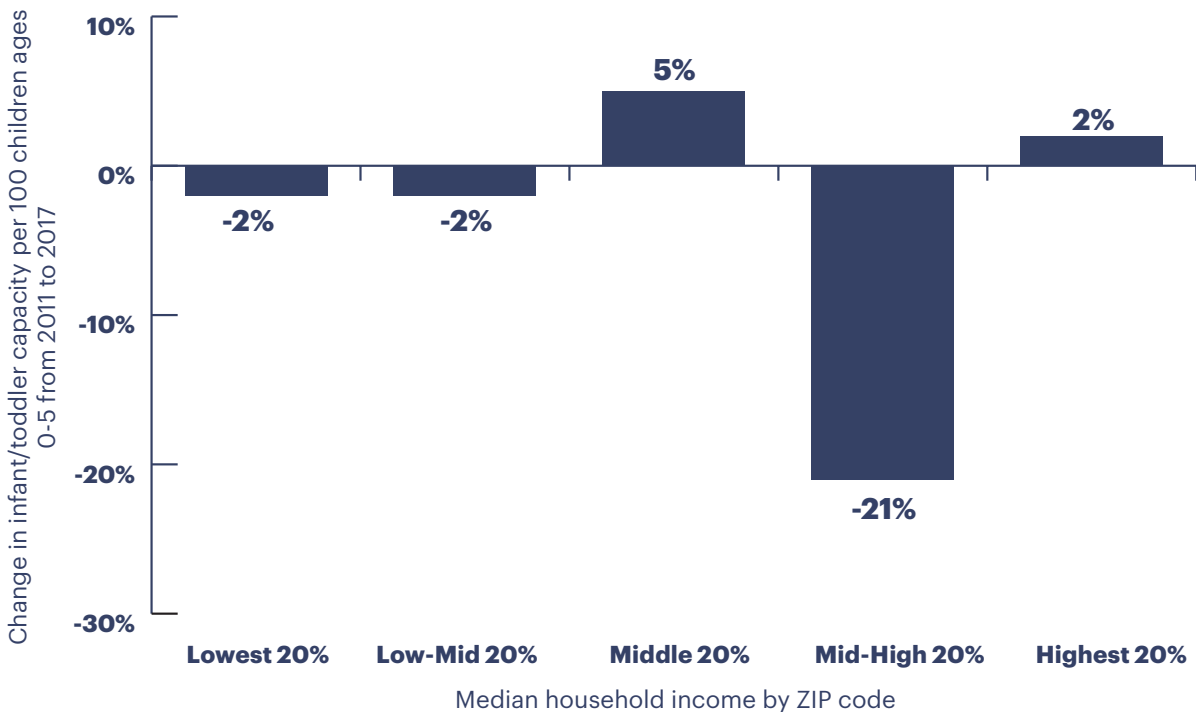
● Child Care Centers    ● Family Child Care    ● Group Family Child Care

\* Infant/toddler capacity is estimated based on: 1) infant and/or toddler capacity for child care centers, and 2) 6 weeks to 12 years / 2 years to 12 years capacity for family child care providers; as a result of the age range, this data may overestimate the amount of capacity dedicated to infants/toddlers.

## Which communities have access to infant/toddler child care?



## Which communities are gaining or losing capacity (from 2011 to 2017)?



Source: Analysis by The Education Trust–New York based on data provided by the New York State Office of Children and Family Services. Learn more at [RaisingNY.org](http://RaisingNY.org). For family providers, infants are defined by New York State as children up to 24 months old and toddlers are children 24 to 36 months old; for center-based providers, infants are children up to 18 months old and toddlers are children 18 to 36 months old.